



Graham Terrace, SW1W 8HN
£950 pw

C&P
CAMERON PEARSON



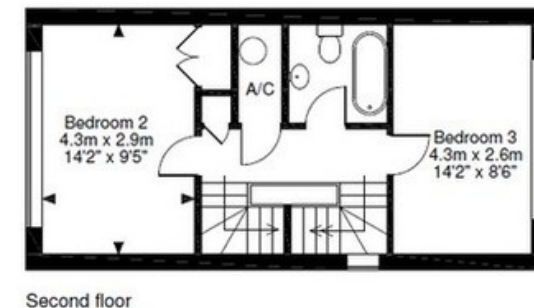
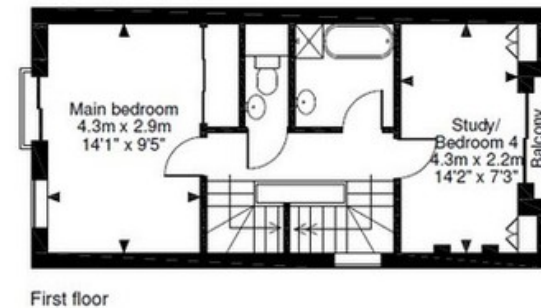
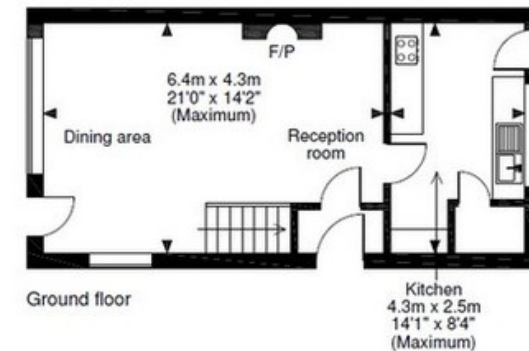
 4 Bedrooms
  2 Bathrooms
  2 Receptions

Cameron Pearson presents this large 4 bedroom house on the popular Graham Terrace, in Chelsea, SW1W. The property comprises a spacious reception and dining room on the ground floor, with adjoining kitchen, a double bedroom / study, bathroom and single bedroom on the 1st floor, Master bedroom, bathroom and twin bedroom on the 2nd floor and a large sun lounge, opening onto a private terrace, on the top floor. Ideally located on Graham Terrace, SW1W, you are moments from Sloane Square, with its host of amenities and underground station (Circle and District Lines), the Kings Road with a large selection of shopping venues, as well as being just around the corner from Pimlico Road and Orange Square, offering a selection of art & antique galleries, cafes and restaurants. For further information and to arrange a viewing, please contact Cameron Pearson Lettings.

- Terrace
- Resident Parking
- No Main Road
- Traditional
- No Lower Ground
- Quiet Road

Graham Terrace, SW1W

1,510sqft / 140sqm





Graham Terrace, SW1W 8HN

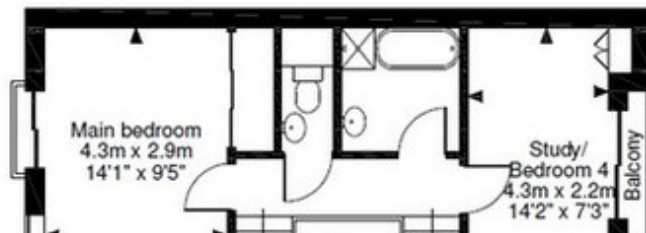
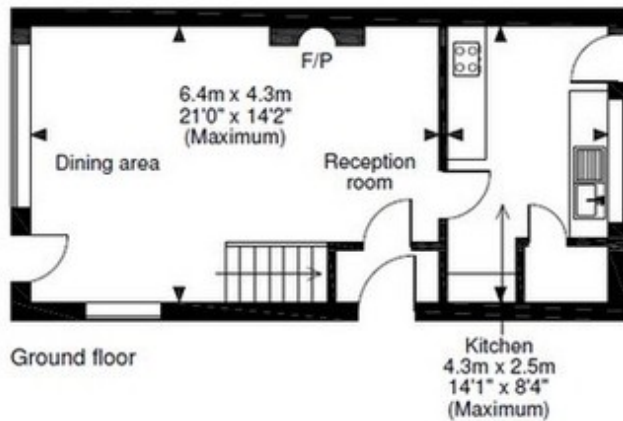
£950 pw



► View this property at <https://www.cameronpearson.co.uk/property/redirect/65398>

Graham Terrace, SW1W

1,510sqft / 140sqm



We are Cameron Pearson an estate agency doing business in a refreshing, forward-thinking and efficient manner. We pride ourselves on having the best quality property and providing an unmatched tailored service.

If you would like more details on this property, or any other properties in our portfolio please do not hesitate to contact us.

111a Walton Street
Knightsbridge
London
SW3 2HP

Tel: 020 7373 3933

Email: enquiries@cameronpearson.co.uk

