



Porchester Place, W2 2BF
£715,000

C&P
CAMERON PEARSON



Porchester Place, W2 2BF

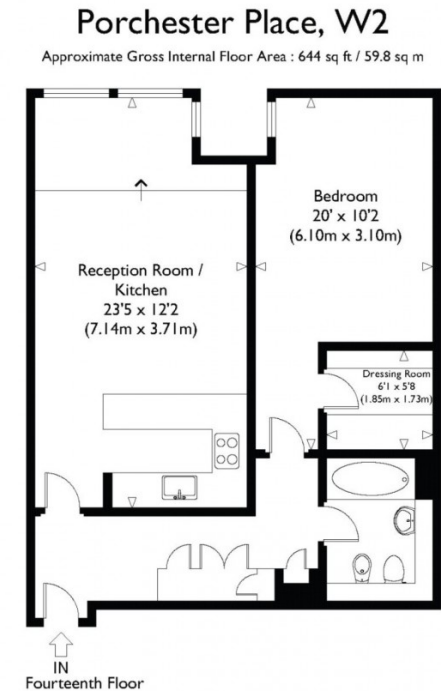
£715,000



1 Bedroom 1 Bathroom 1 Reception

Cameron Pearson brings to market this is a well presented 1 bedroom flat to rent on the fourteenth floor of this modern building in the ever popular Porchester Place development in W2. The apartment is extremely bright and spacious with spectacular south facing views of Hyde Park and the whole of London. Hyde Park, the amenities of Connaught Village and the world-class shopping on Oxford Street are only a short walk away. National Rail services from Paddington and the Underground at Lancaster Gate and Marble Arch are easily accessible. The apartment is available as a Leasehold purchase; approx. 161 years remaining. Contact Cameron Pearson Sales for further details and to arrange a viewing.

- Porter
- Modern
- Quiet Road
- Lift
- No Walk Ups





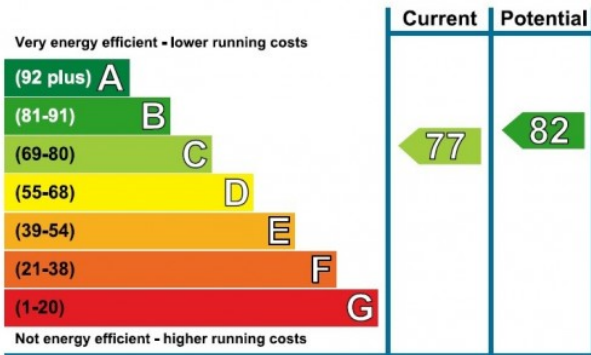
Porchester Place, W2 2BF

£715,000



► View this property at <https://www.cameronpearson.co.uk/property/redirect/62654>

Energy Efficiency Rating



The graph shows the current energy efficiency of your home.

The higher the rating the lower your fuel bills are likely to be.

The potential rating shows the effect of undertaking the recommendations on page 3.

The average energy efficiency rating for a dwelling in England and Wales is band D (rating 60).

The EPC rating shown here is based on standard assumptions about occupancy and energy use and may not reflect how energy is consumed by individual occupants.

We are Cameron Pearson an estate agency doing business in a refreshing, forward-thinking and efficient manner. We pride ourselves on having the best quality property and providing an unmatched tailored service.

If you would like more details on this property, or any other properties in our portfolio please do not hesitate to contact us.

111a Walton Street
Knightsbridge
London
SW3 2HP

Tel: 020 7373 3933

Email: enquiries@cameronpearson.co.uk

