



Bayswater, W2 3LB  
£690 pw

*C&P*  
CAMERON PEARSON



 2 Bedrooms  2 Bathrooms

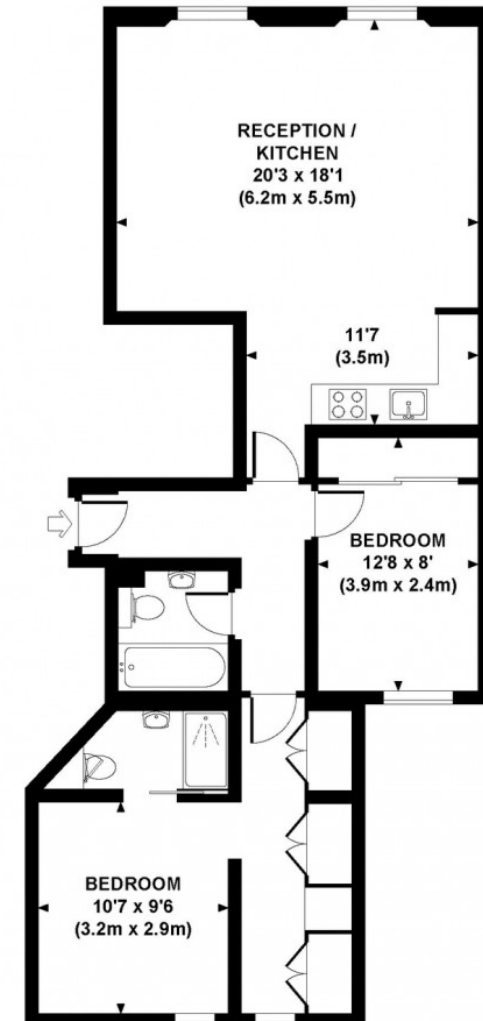
This newly refurbished two bedroom, two bathroom property is situated in a well maintained stucco fronted building on 2nd floor (with lift) and is light and bright with generous proportions. Contact Cameron Pearson for further information.

- Period
- Resident Parking

- Refurbished
- Traditional

### INVERNESS TERRACE, W2

Approx. gross internal area  
795 Sq Ft. / 73.9 Sq M.





Bayswater, W2 3LB

£690 pw



► View this property at <https://www.cameronpearson.co.uk/property/redirect/5700>

We are Cameron Pearson an estate agency doing business in a refreshing, forward-thinking and efficient manner. We pride ourselves on having the best quality property and providing an unmatched tailored service.

If you would like more details on this property, or any other properties in our portfolio please do not hesitate to contact us.

111a Walton Street  
Knightsbridge  
London  
SW3 2HP

Tel: 020 7373 3933

Email: [enquiries@cameronpearson.co.uk](mailto:enquiries@cameronpearson.co.uk)

