





Crawford Street, Marylebone, W1H 5LR
£690 pw

C&P
CAMERON PEARSON



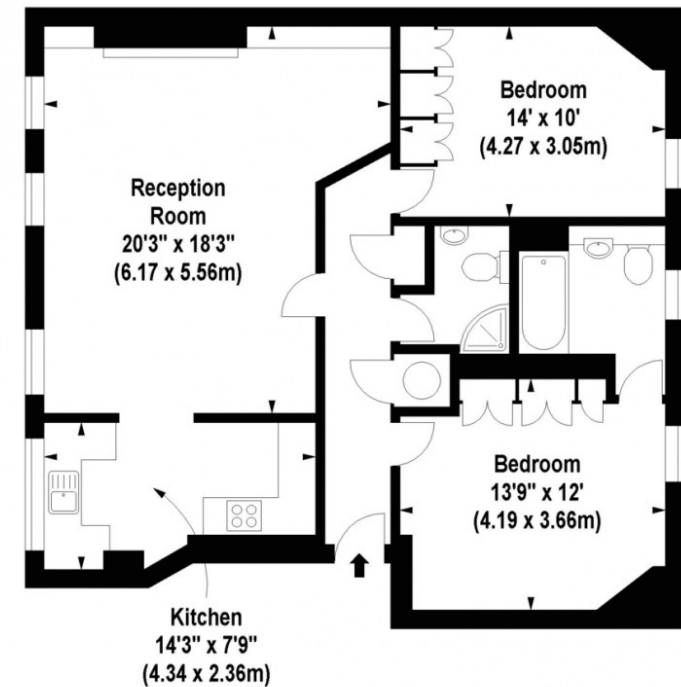
 2 Bedrooms  2 Bathrooms  1 Reception

Cameron Pearson bring to the market a newly refurbished two bedroom flat to rent in this portered block close to excellent transport links and the open spaces of Hyde Park. Set on the fourth floor, with a lift, this property has wood floors throughout, modern furnishings and contemporary decor. Available now the apartment consists of a large reception, semi open-plan kitchen, two double bedroom and two bathrooms. Ideally located for a short walk to the ever popular Marylebone High Street with its shops, bars and restaurants.

- Lift
- No Main Road
- Refurbished
- No Lower Ground
- No Walk Ups
- Resident Parking

Macready House, Crawford Street, W1

Approx. Gross Internal Area *
930 Sq Ft - 86.40 Sq M



Fourth Floor

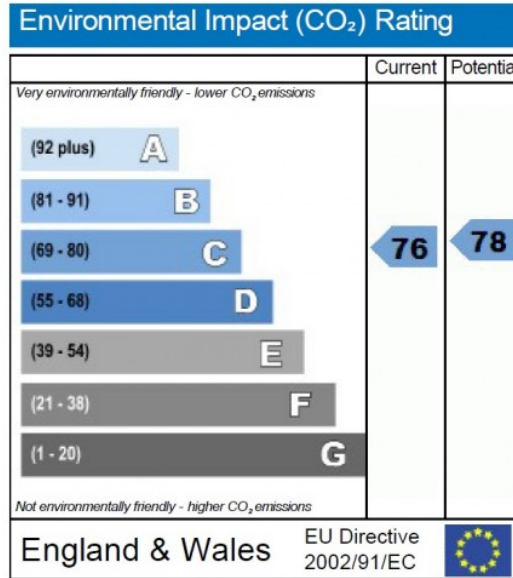
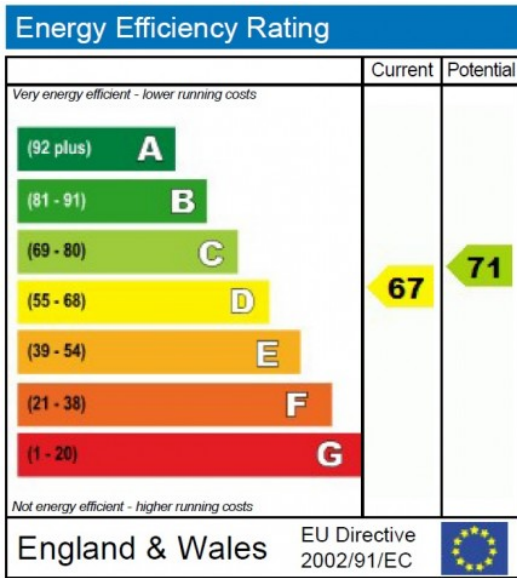


Crawford Street, Marylebone, W1H 5LR

£690 pw



► View this property at <https://www.cameronpearson.co.uk/property/redirect/5258>



We are Cameron Pearson an estate agency doing business in a refreshing, forward-thinking and efficient manner. We pride ourselves on having the best quality property and providing an unmatched tailored service.

If you would like more details on this property, or any other properties in our portfolio please do not hesitate to contact us.

111a Walton Street
Knightsbridge
London
SW3 2HP

Tel: 020 7373 3933

Email: enquiries@cameronpearson.co.uk

