






Evelyn Gardens, SW7 3BH

£805 pw

C&P
CAMERON PEARSON



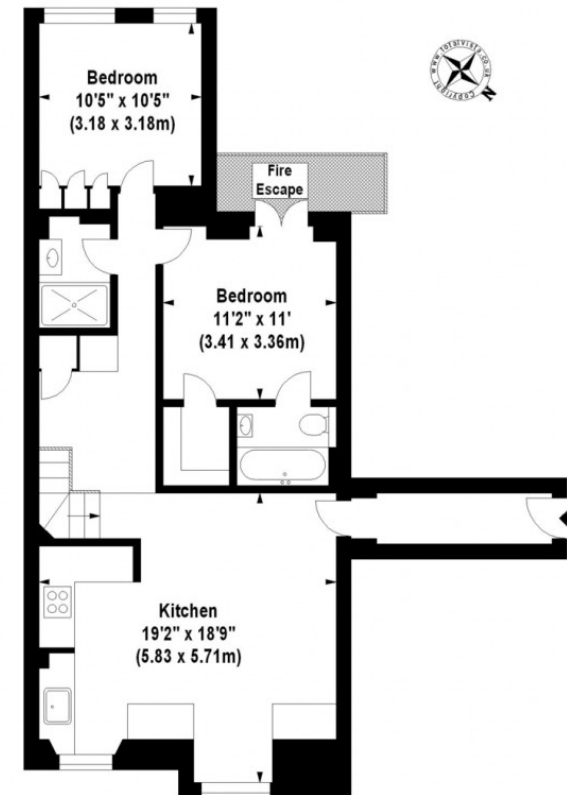
 2 Bedrooms  2 Bathrooms  1 Reception

Cameron Pearson presents a newly refurbished two bedroom, two bathroom flat located on the 3rd floor (with a lift) of an attractive building on Evelyn Gardens, SW7. With neutral decor and contemporary fixtures and fittings, the property comprises of an open-plan reception with fully-fitted kitchen, master bedroom with walk-in wardrobe and en-suite bathroom, second double bedroom with built-in wardrobes and a second bathroom. The flat further benefits from the nearby amenities and transport links of Gloucester Road and South Kensington. Please contact Cameron Pearson Lettings for further information and to arrange a viewing.

- Period
- No Walk Ups
- No Main Road
- Carpets
- Refurbished
- Lift
- Open Plan Kitchen
- Resident Parking
- Modern

Evelyn Gardens, SW7

Approx. Gross Internal Area *
836 Sq Ft - 77.66 Sq M



Third Floor

Illustration For Identification Purposes Only. Not To Scale
*Floorplan Drawn According To RICS Guidelines
© www.totalvista.co.uk 2012 (aa)



Evelyn Gardens, SW7 3BH

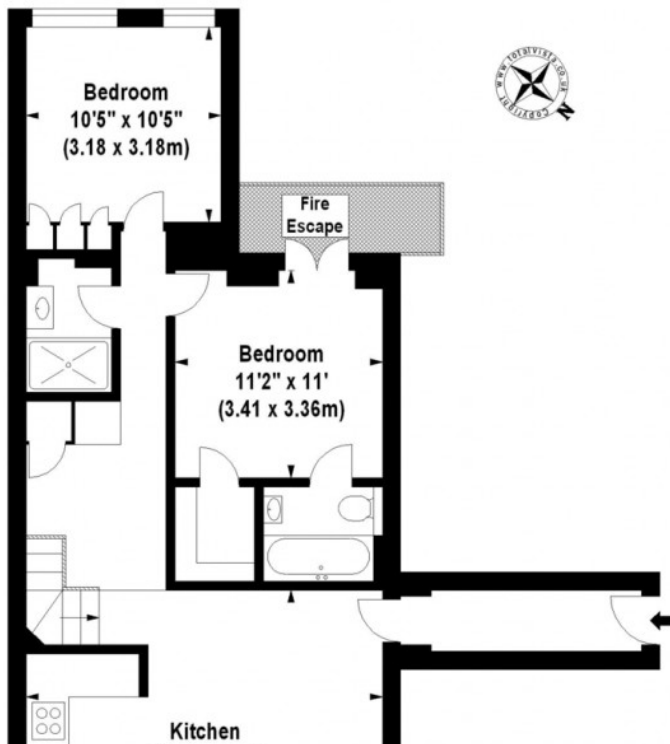
£805 pw



► View this property at <https://www.cameronpearson.co.uk/property/redirect/5224>

Evelyn Gardens, SW7

Approx. Gross Internal Area *
836 Sq Ft - 77.66 Sq M



We are Cameron Pearson an estate agency doing business in a refreshing, forward-thinking and efficient manner. We pride ourselves on having the best quality property and providing an unmatched tailored service.

If you would like more details on this property, or any other properties in our portfolio please do not hesitate to contact us.

111a Walton Street
Knightsbridge
London
SW3 2HP

Tel: 020 7373 3933

Email: enquiries@cameronpearson.co.uk

