





Clifton Place, W2 2SN
£1,500,000

C&P
CAMERON PEARSON



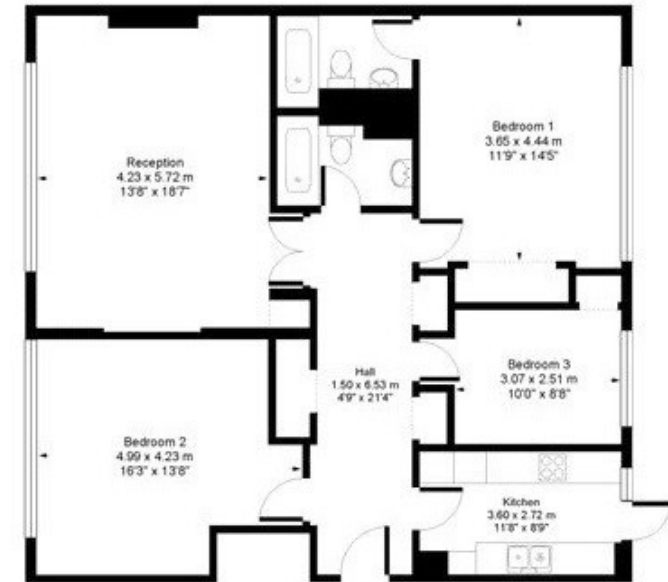
 3 Bedrooms  2 Bathrooms  1 Reception

Cameron Pearson are pleased to offer this 3 bedroom apartment for sale in Hyde Park, W2. The property offers over 1100 sq ft of living space with wooden floors throughout and onsite porter. There is a master bedroom with an en-suite bathroom, 2 further bedrooms and family bathroom. The flat further boasts plenty of built in storage space/wardrobes, separate fully integrated kitchen and a large reception. Located just a stones throw from London Paddington, you are ideally located for a host of amenities, transport links and the open spaces on Hyde Park. The property is offered on a leasehold basis.

- Modern
- Porter
- No Walk Ups
- Wood floors
- No Main Road
- No Lower Ground

Clifton Place, W2

1,205sqft / 111sqm



GROUND FLOOR

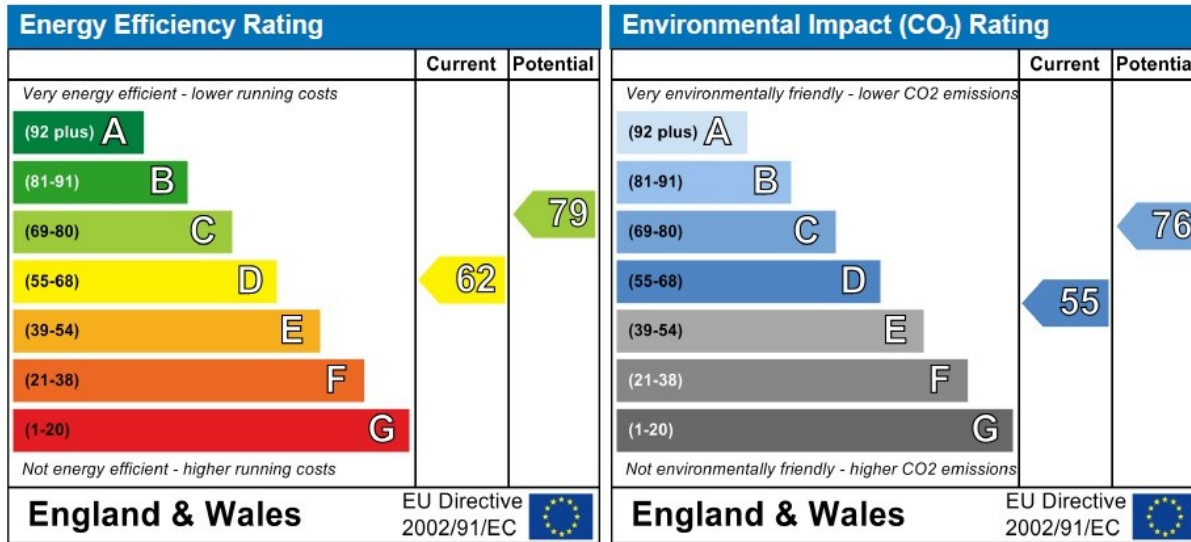


Clifton Place, W2 2SN

£1,500,000



► View this property at <https://www.cameronpearson.co.uk/property/redirect/50771>



We are Cameron Pearson an estate agency doing business in a refreshing, forward-thinking and efficient manner. We pride ourselves on having the best quality property and providing an unmatched tailored service.

If you would like more details on this property, or any other properties in our portfolio please do not hesitate to contact us.

111a Walton Street
Knightsbridge
London
SW3 2HP

Tel: 020 7373 3933

Email: enquiries@cameronpearson.co.uk

